

State of Wyoming Corner Record

(in compliance with the CORNER PERPETUATION AND FILING ACT, Wyoming Statutes, 1997, Section 33-29-140, et. seq. and the Rules and Regulations of the Board of Registration for Professional Engineers and Professional Land Surveyors)

Reverse side of this form may be used if more space is needed.

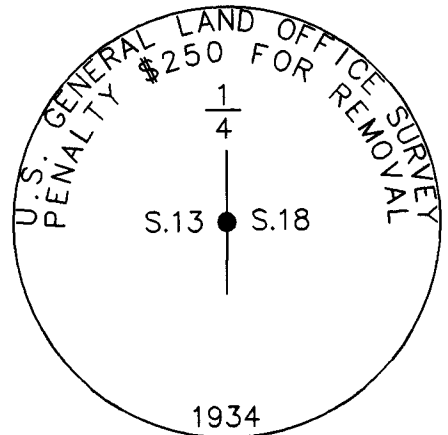
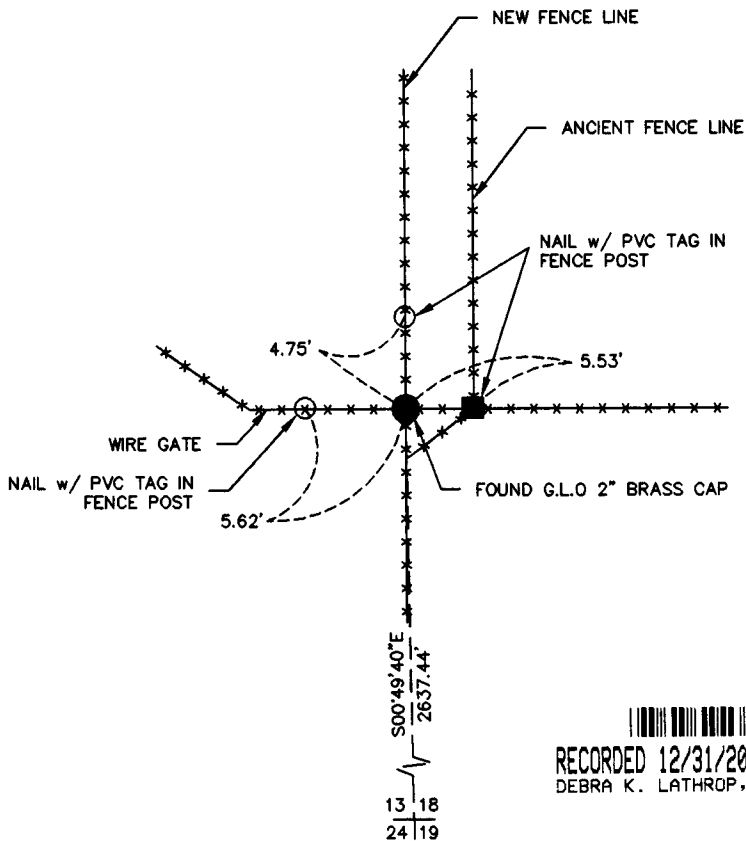
Record of original survey and citation of source of historical information (if corner is lost or obliterated). Description of corner monumentation evidence found and/or monument and accessories established to perpetuate the location of this corner. Sketch of relative location of monument, accessories, and reference points with course and distance to adjacent corner(s) (if determined in this survey). Method and rationale for reestablishment of lost or obliterated corner.

FOUND: FOUND G.L.O. BRASS CAP ON IRON PIPE, 2" DIAMETER IN GOOD CONDITION, SET 0.6' ABOVE GROUND AT A 4-WAY FENCE INTERSECTION. SET A LATHE & REFERENCED AS SHOWN.

G.L.O. RECORD: IRON POST 3' LONG, 1" DIAMETER, 27" IN THE GROUND WITH ORIGINAL STONE DEPOSITED ALONG SIDE, AND A BRASS CAP.

SET: NOTHING

REFERENCES: SET AS SHOWN

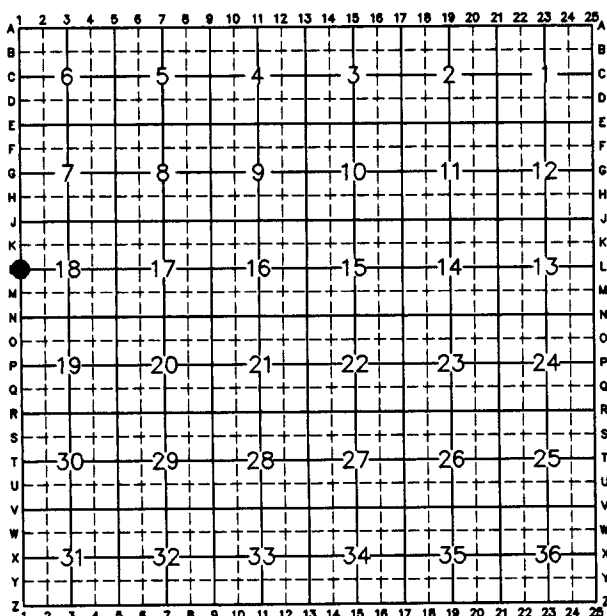


FOUND MONUMENT DETAIL

RECORDED 12/31/2003 AT 1:38 PM REC# 375043 BK# 1784 PG# 1246
DEBRA K. LATHROP, CLERK OF LARAMIE COUNTY, WY PAGE 1 OF 1

Date of Field Work: 12-03 Office Reference: 2-2389.03

CROSS INDEX DIAGRAM



Firm/Agency, Address
Cotton D. Jones, P.L.S.
A.V.I., p.c.
2035 Westland Road
Cheyenne, WY 82001
Telephone Number: (307) 637-6017

This corner record was by Cotton D. Jones or under my direction and supervision.
SEAL & SIGNATURE

